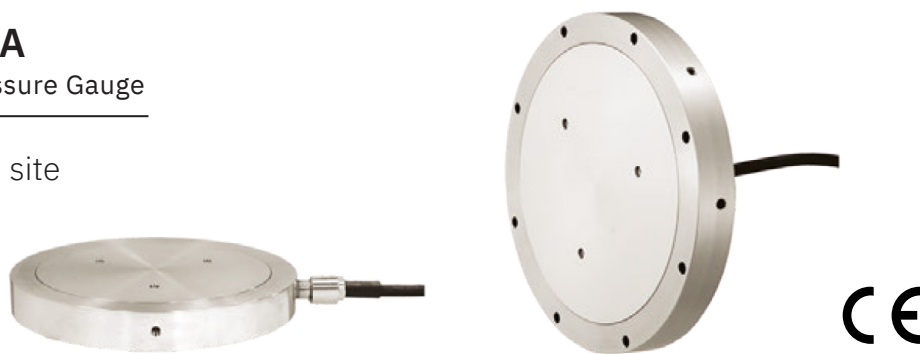


ε **KDJ-PA/KDK-PA**
Load Cell type Soil Pressure Gauge

Soil pressure at construction site



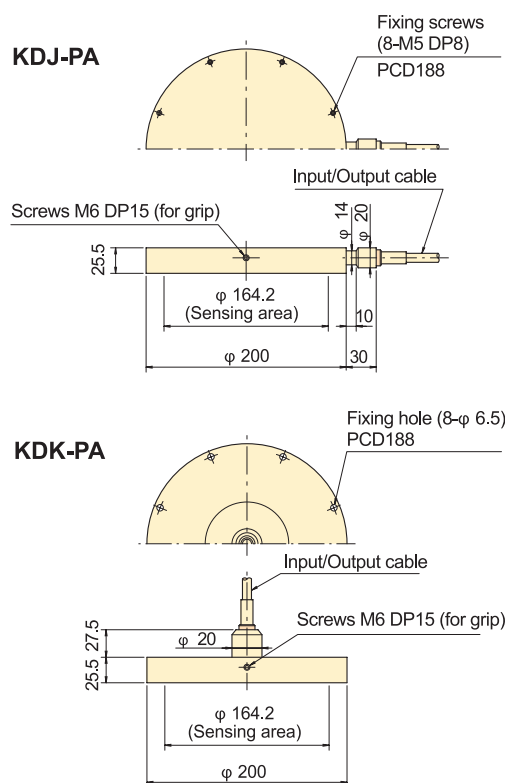
The KDJ-PA and KDK-PA are stainless-steel soil pressure gauges each 200 mm in outside diameter. They are load-cell-type soil pressure gauges and designed with a high level of resistance to lateral pressure. The difference between these two models is the way the cable is attached to the gauge body.

Protection ratings: IP68 equivalent

FEATURE

- Made of all stainless steel with excellent
- Corrosion resistance
- Robuster than the diaphragm type

DIMENSION



SPECIFICATIONS

TYPE	KDJ-200KPA KDK-200KPA	KDJ-500KPA KDK-500KPA	KDJ-1MPA KDK-1MPA	KDJ-2MPA KDK-2MPA
Capacity	200kPa	500kPa	1MPa	2MPa
Rated Output	1mV/V(2000×10 ⁻⁶ strain)			
Non-linearity	1%RO			
Allowable temperature range	-20 ~ +60°C			
Input/Output resistance	350Ω			
Recommended exciting voltage	3V or less			
Allowable exciting voltage	10V			
Cable drawing direction	KDJ-PA: from side of body		KDK-PA: from back of body	
Weight	5.2 kg			

Input/Output cable :
φ 9mm 0.5mm² 4-core shielded chloroprene cable 2m