



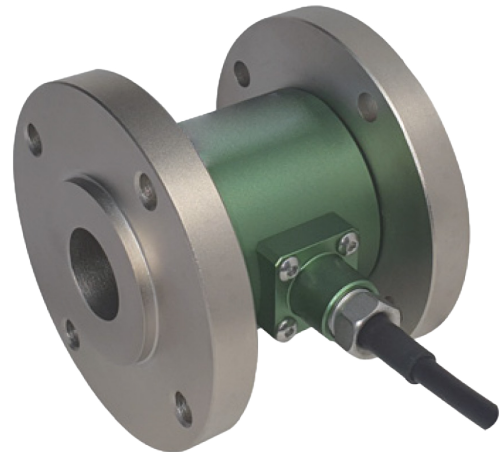
Nm

ABRTL-NR SERIES

Flanged Type Reaction Torque Transducer (10Nm~2000Nm)

FEATURES

- Alloy steel
- Robust design
- Electroless nickel plated

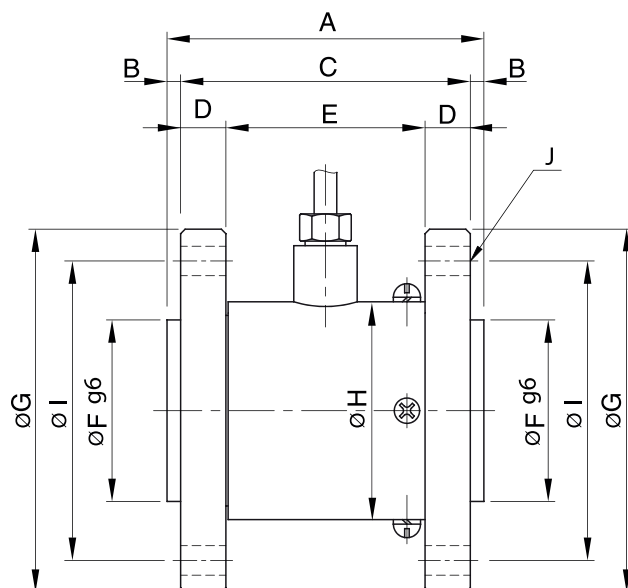


TECHNICAL SPECIFICATIONS

MODEL	ABRTL - NR	
Rated capacity (R.C.)	10, 20, 50, 100, 200, 500, 1000, 2000Nm	
Rated output (R.O.)	1.0mV/V \pm 0.5%	
Non-linearity	\leq 0.2% R.O.	
Hysteresis	\leq 0.2% R.O.	
Non-repeatability	\leq 0.1% R.O.	
Creep error	\leq 0.2% in 20min.	
Zero balance	\leq 1% R.O.	
Compensated temperature range	-10 ~ 70°C	
Operating temperature range	-20 ~ 80°C	
Temp. effect on rated output	\leq 0.01% LOAD/10°C	
Temp. effect on zero balance	\leq 0.01% R.O./10°C	
Terminal input resistance	420 Ohms \pm 50 Ohms	
Terminal output resistance	350 Ohms \pm 5 Ohms	
Insulation resistance (Min.)	2000 MOhms at 50V DC	
Excitation voltage	3~12V(Recommended), 15V(Max.)	
Electrical connection (22AWG x 4Core Shielded)	10 - 100Nm	Ø5mm x 3m
	200-2000Nm	Ø7mm x 6m
Safe overload	150% R.C	
Ultimate overload	300% R.C	



DIMENSION-mm (inch)



Rated Capacity	A	B	C	D	E	ØF	ØG	ØH	ØI	J	Weight (kg)
10, 20Nm (1.02, 2.04kg-m)	62	3	56	8	40	30	66	40	52	2 x 4 - Ø5.5	0.9
50Nm (5.10kg-m)	70	3	64	10	44	40	78	48	66	2 x 4 - Ø6.5	1.5
100Nm (10.2kg-m)	70	3	64	10	44	40	78	48	66	2 x 4 - Ø6.5	1.5
200Nm (20.4 kg-m)	86	3	80	15	50	40	98	58	78	2 x 6 - Ø10.5	1.8
500Nm (51.0kg-m)	126	3	120	20	80	60	118	58	95	2 x 6 - Ø10.5	2.7
1000Nm (102kg-m)	136	3	130	20	90	60	146	80	115	2 x 6 - Ø14	2.9
2000Nm (204kg-m)	146	3	140	25	90	60	166	88	130	2 x 6 - Ø18	3.2

* Specifications are subject to change without notice

ORDERING INFORMATION

ABRTL-NR - **50**
MODEL CAPACITY
ABRTL-NR 10, 20, 50, 100, 200,
500, 1000, 2000Nm

WIRING INFORMATION

